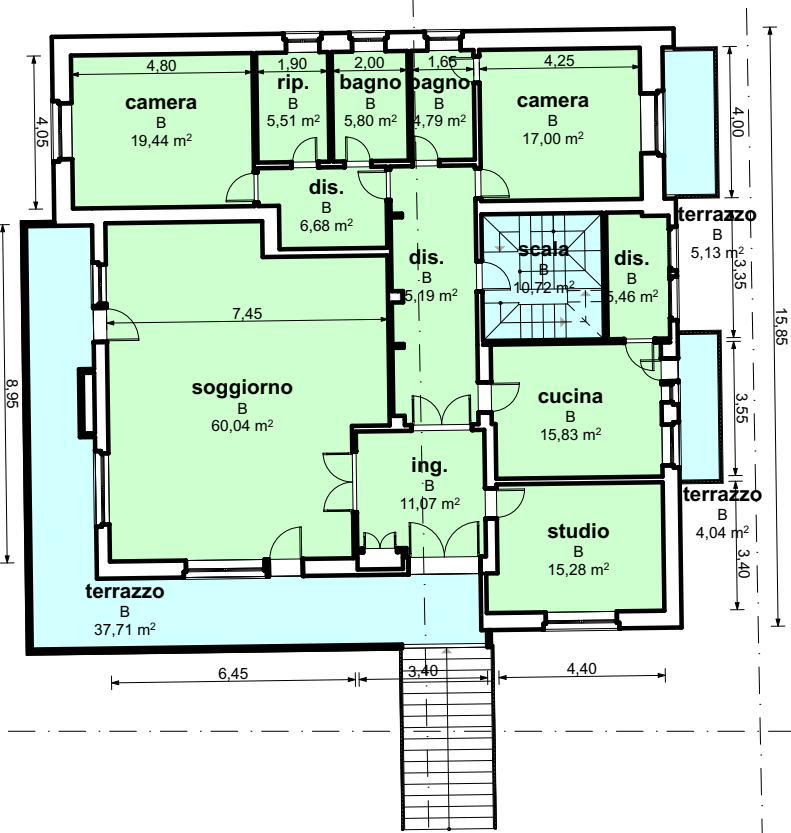
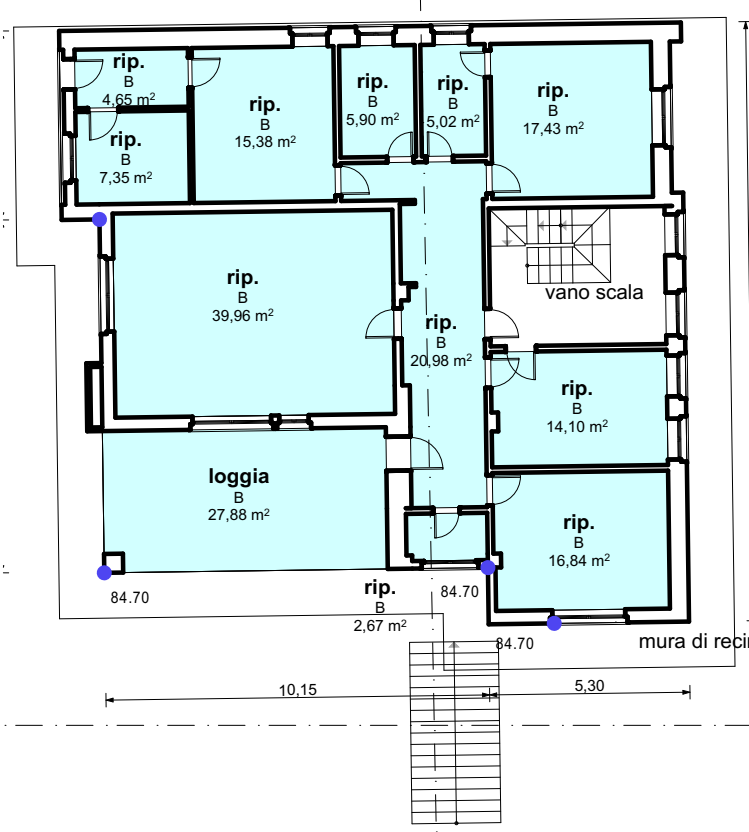


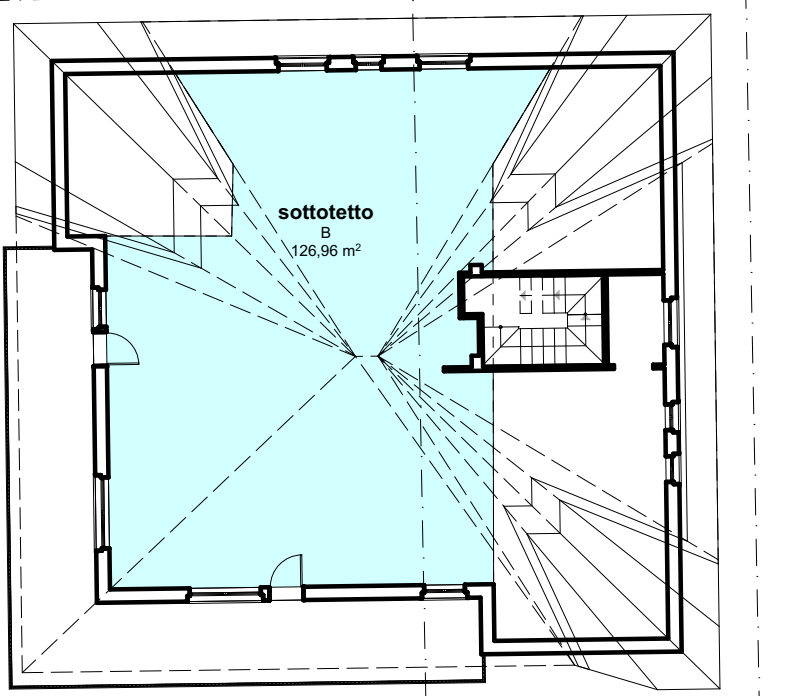
piano interrato 1:200



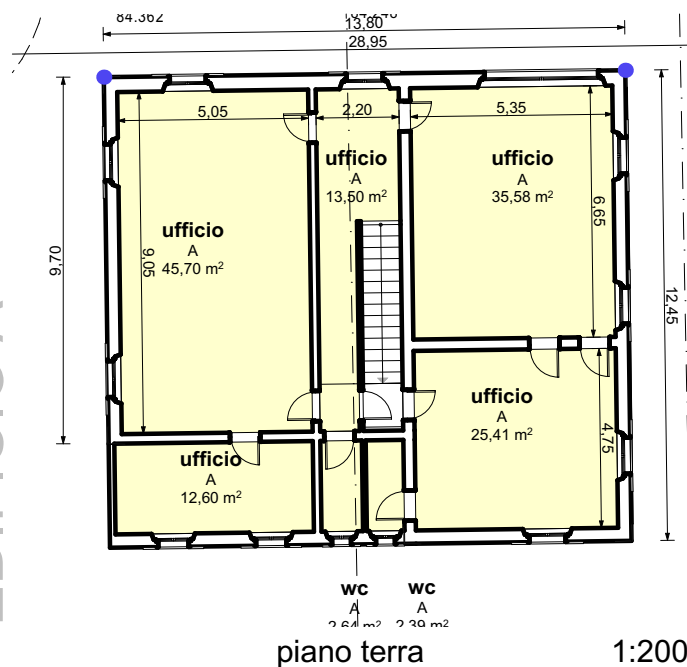
piano primo 1:200



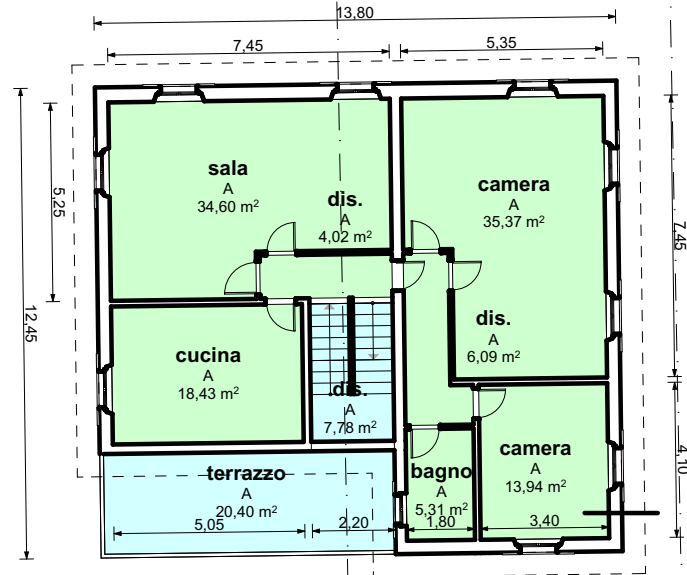
piano terra 1:200



piano sottotetto 1:200



piano terra 1:200

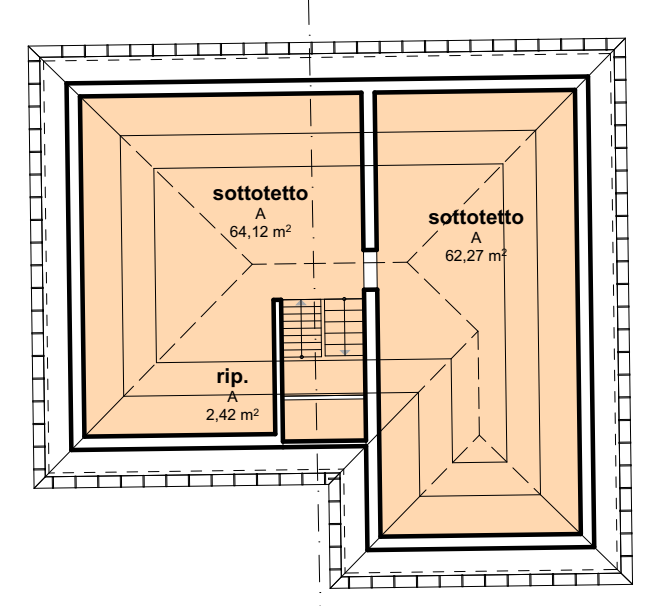


piano primo 1:200

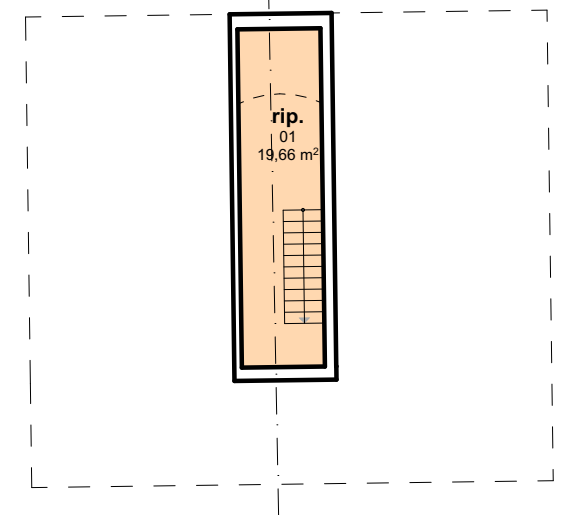
EDIFICIO B  
EDIFICIO A



sezione 1:200



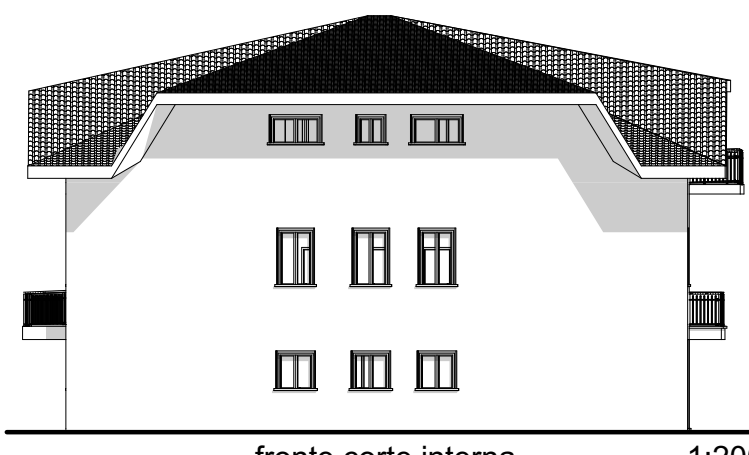
piano sottotetto 1:200



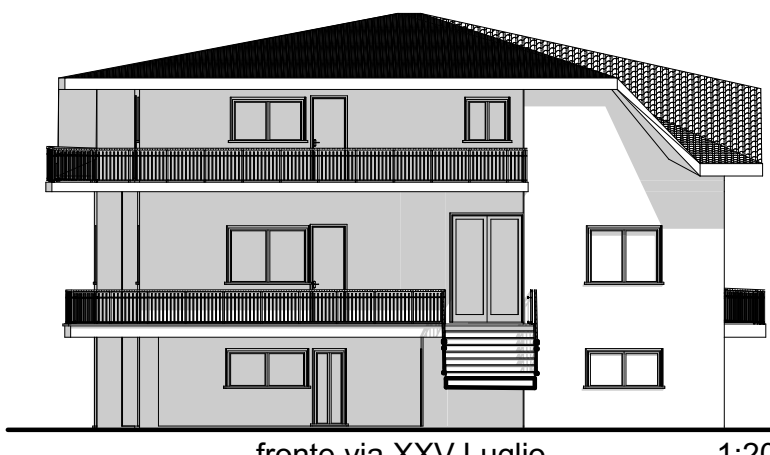
piano interrato 1:200



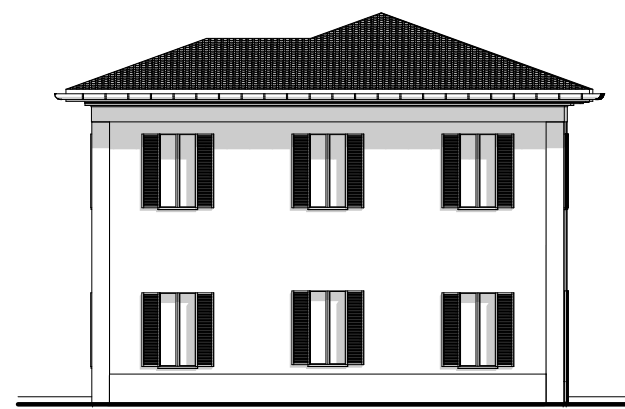
sezione 1:200



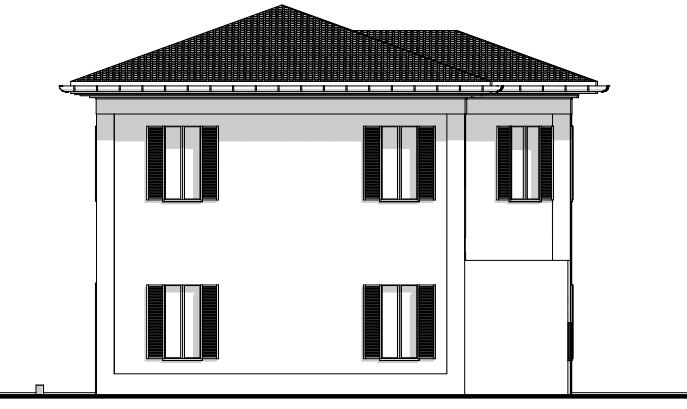
fronte corte interna 1:200



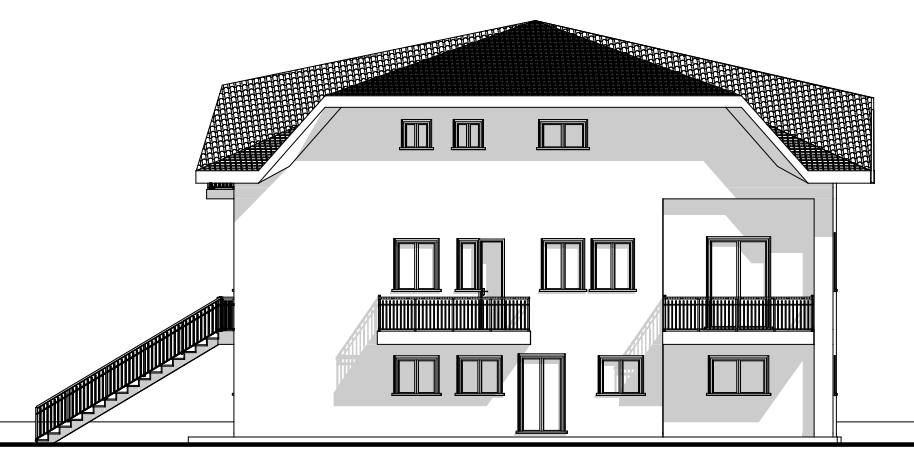
fronte via XXV Luglio 1:200



fronte piazza Risorgimento 1:200



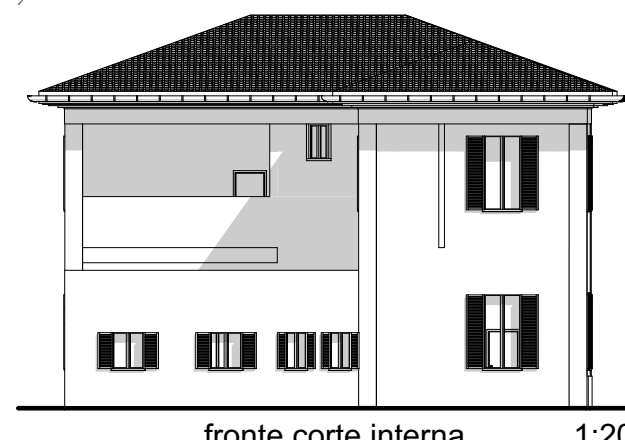
fronte piazza Ghigi 1:200



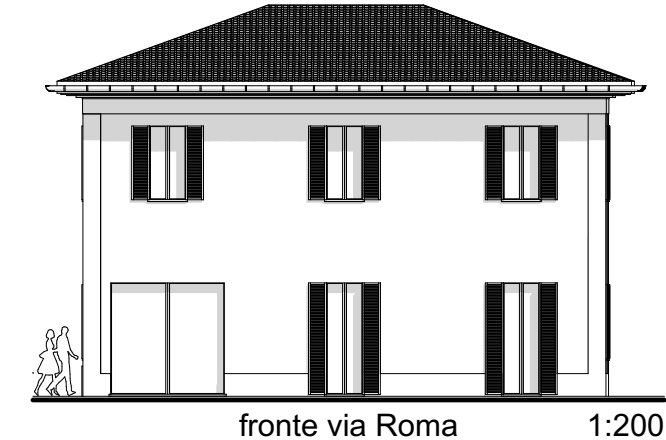
fronte piazza Risorgimento 1:200



fronte piazza Ghigi 1:200



fronte corte interna 1:200



fronte via Roma 1:200

ARCHIGEO STUDIO DI ARCHITETTURA E GEOMETRIA  
 ARCHITETTO GIACCARLO BETTI  
 Geologo Lucilla Tentari  
 47833 Morciano di Romagna (RN) - Abbazia 49  
 tel. 327 1524148 Email: info@studioarchigeco.it

NUOVO COMPLESSO  
**PALAZZO IMOLA**  
 comparto C1 (m21)

Comune di Morciano di Romagna  
 piazza Risorgimento - via Roma - via XXV Luglio

STATO DI FATTO  
 Edifici esistenti da recuperare

**A.01.05**