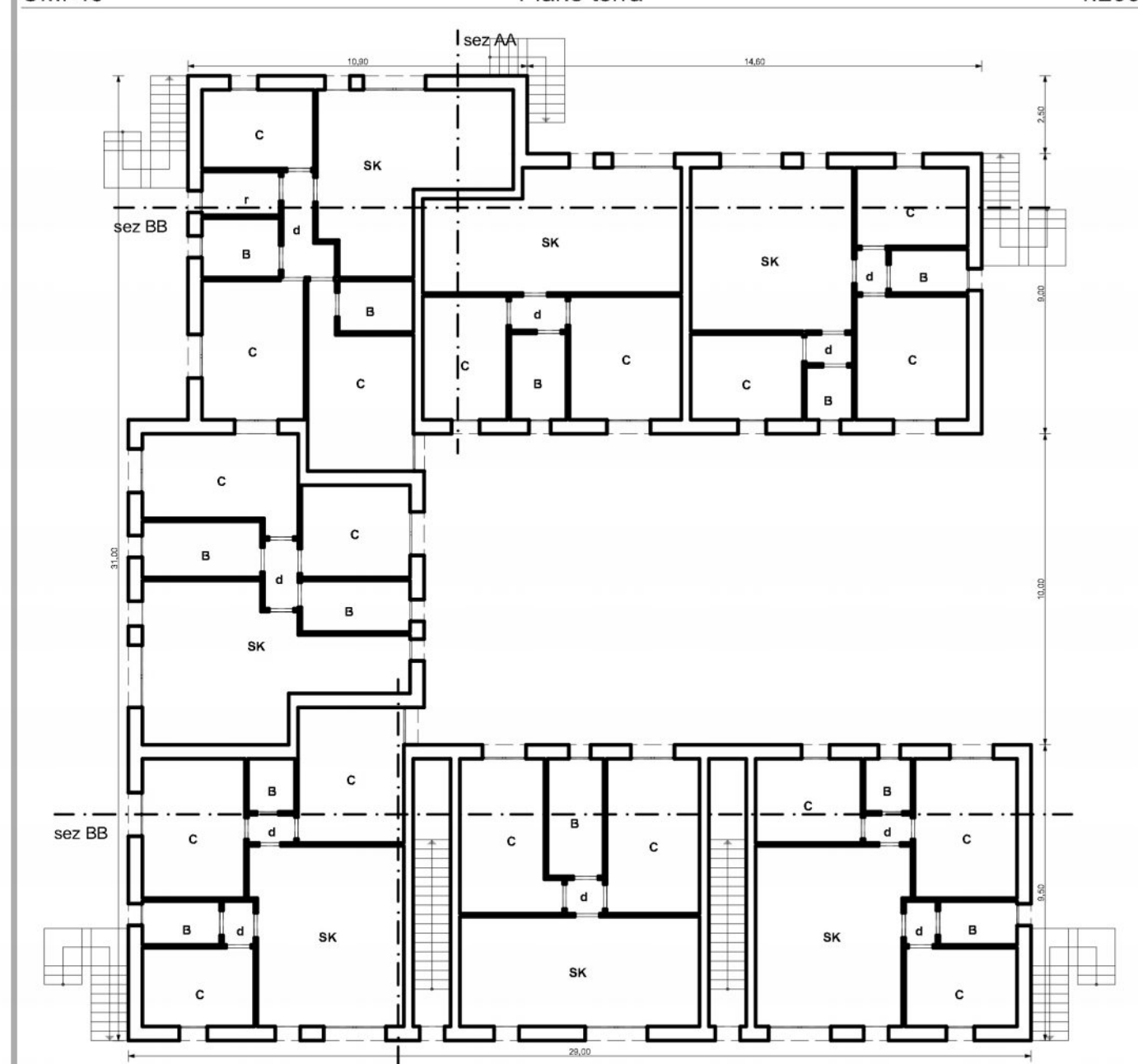
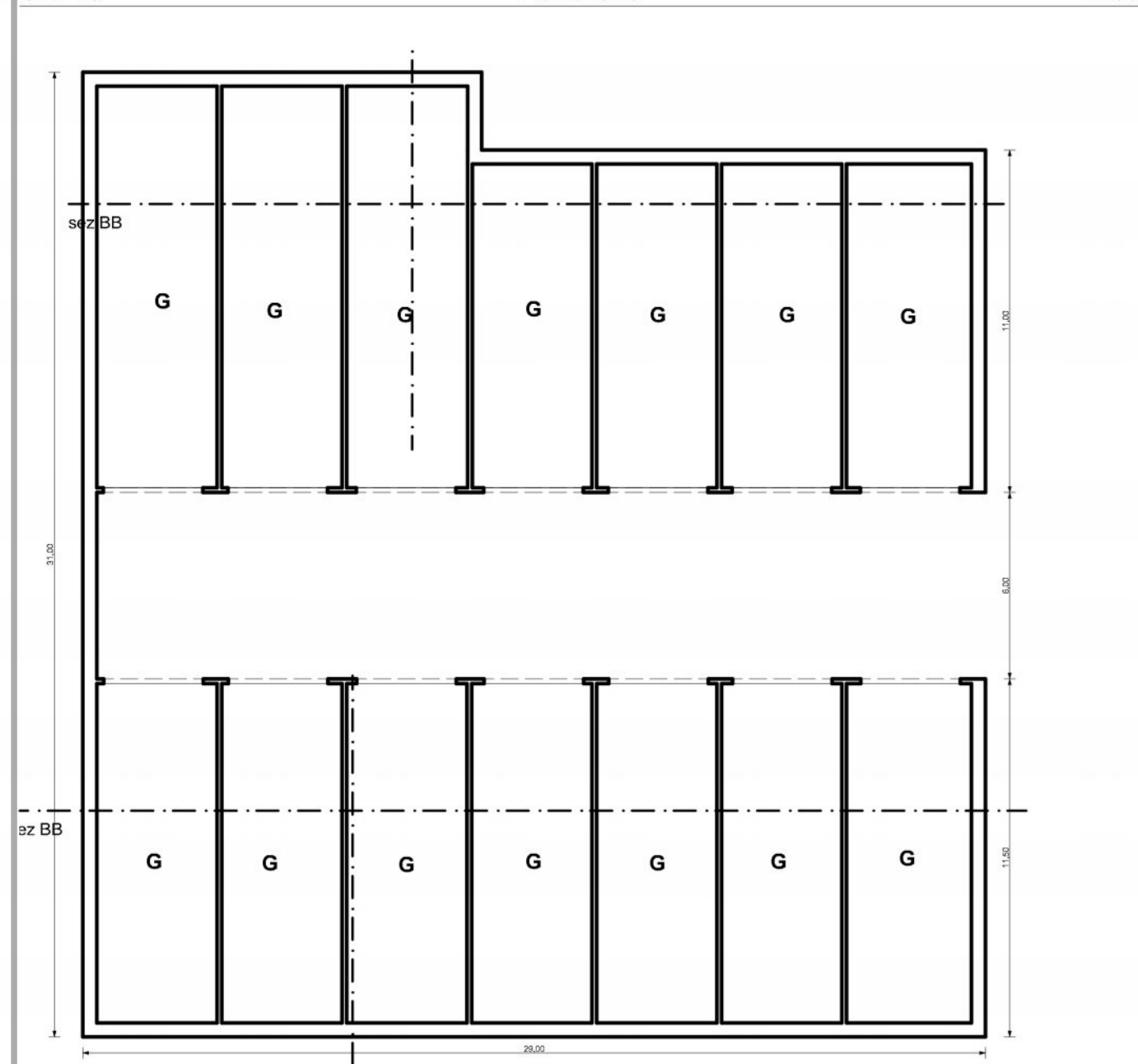


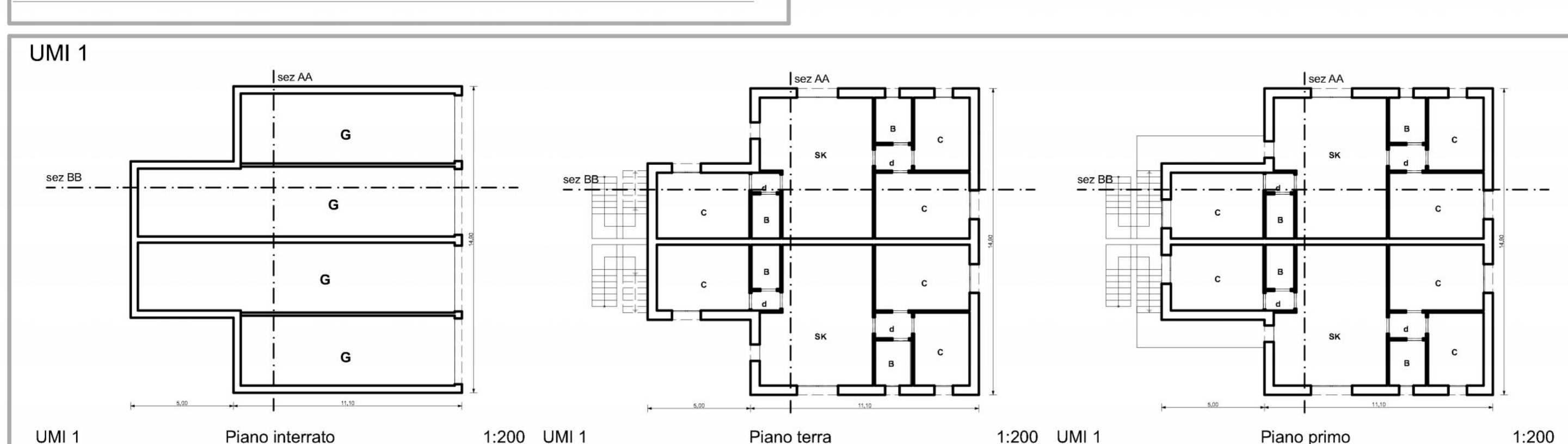
UMI 45 Piano terra 1:200



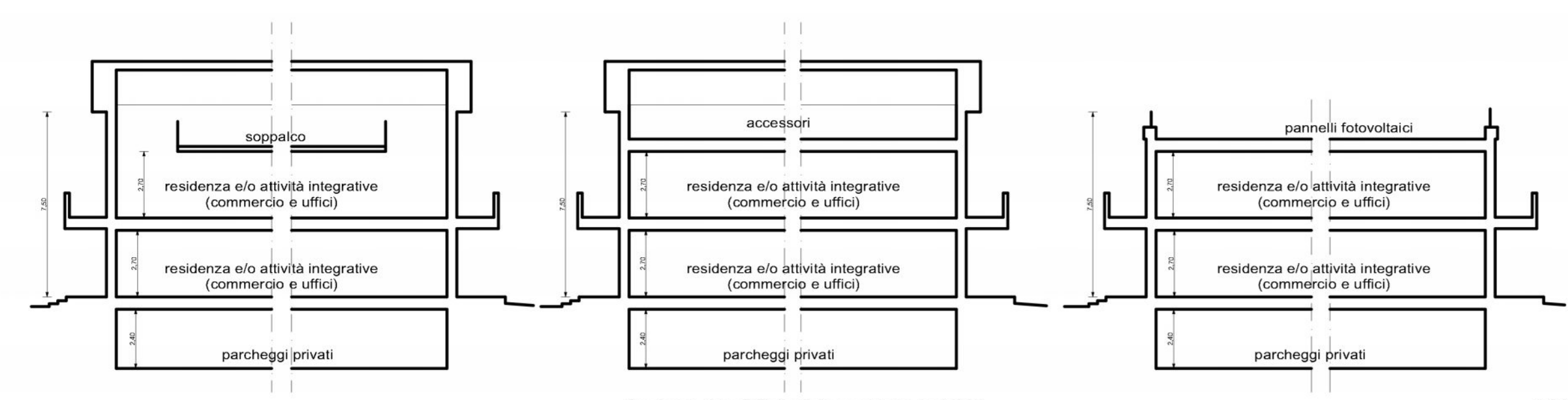
UMI 45 Piano terra 1:200



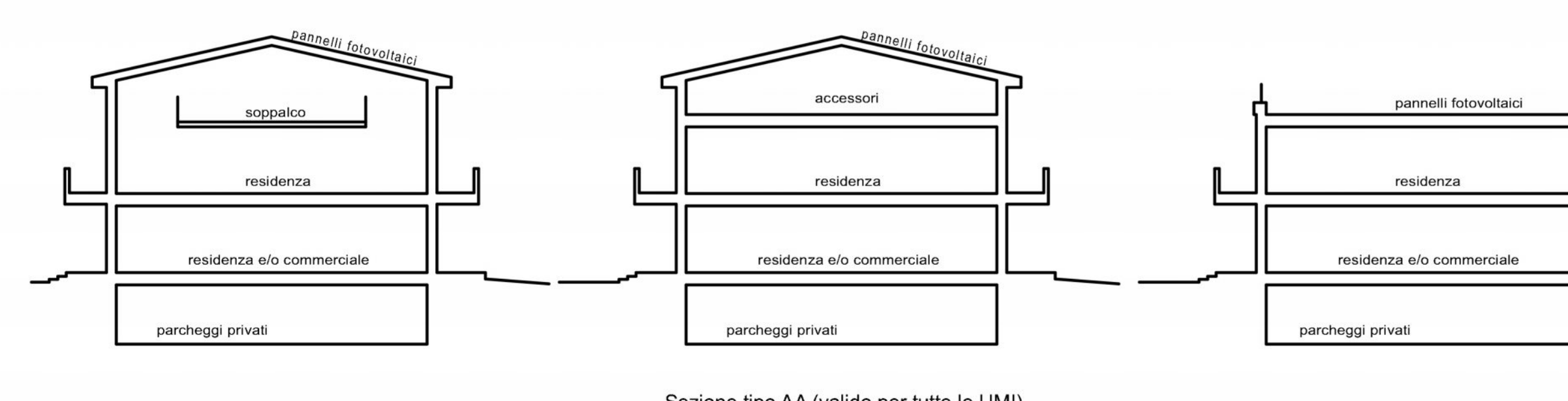
UMI 45 Piano interrato 1:200



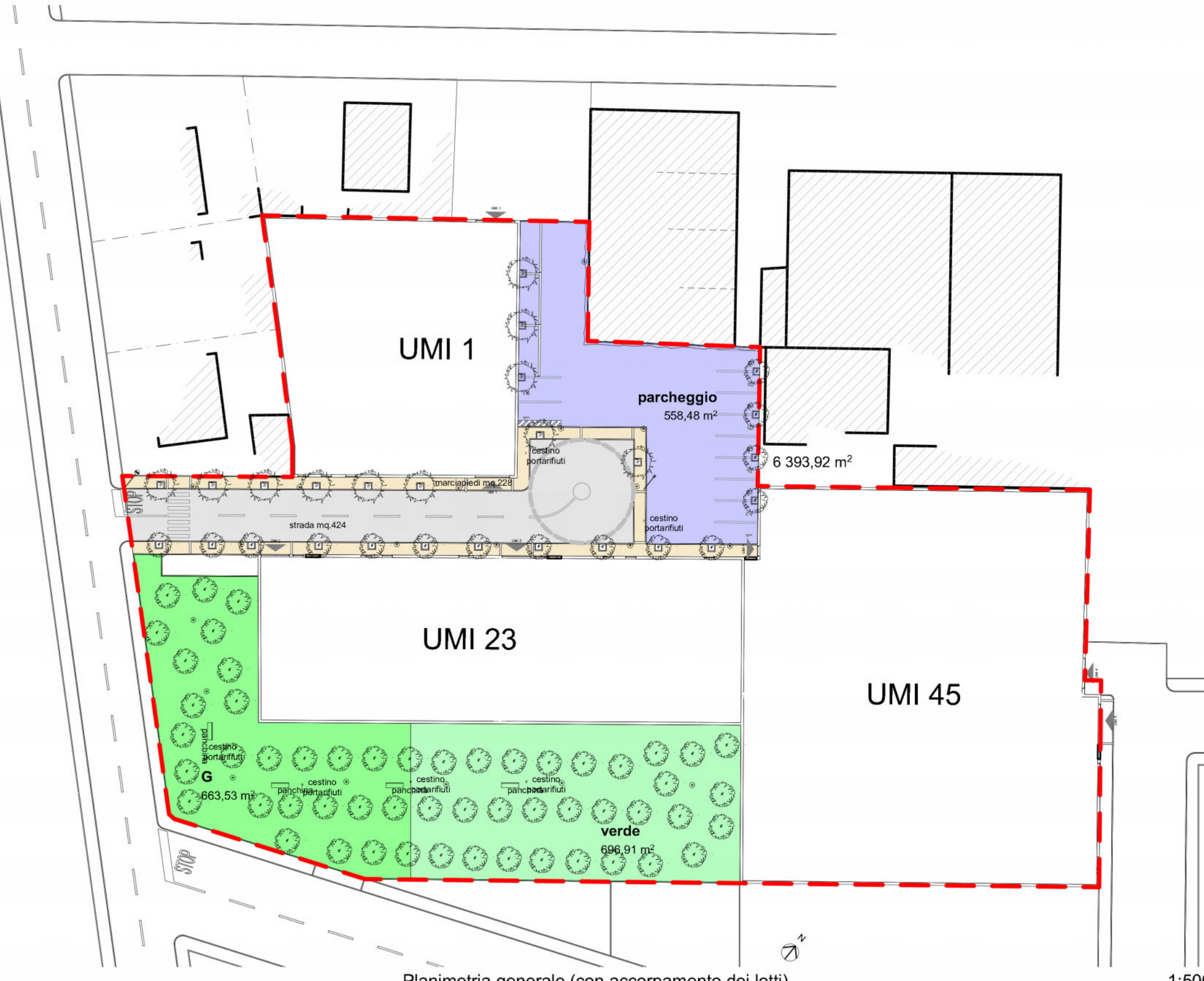
UMI 1 Piano interrato 1:200 UMI 1 Piano terra 1:200 UMI 1 Piano primo 1:200



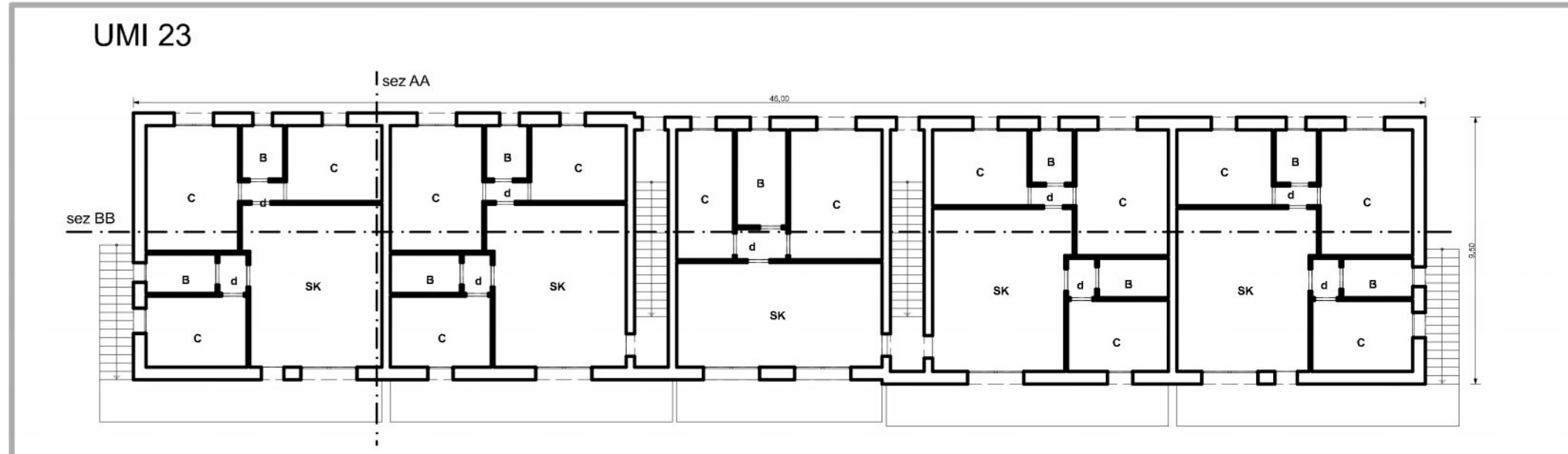
Sezione tipo BB (valido per tutte le UMI) 1:200



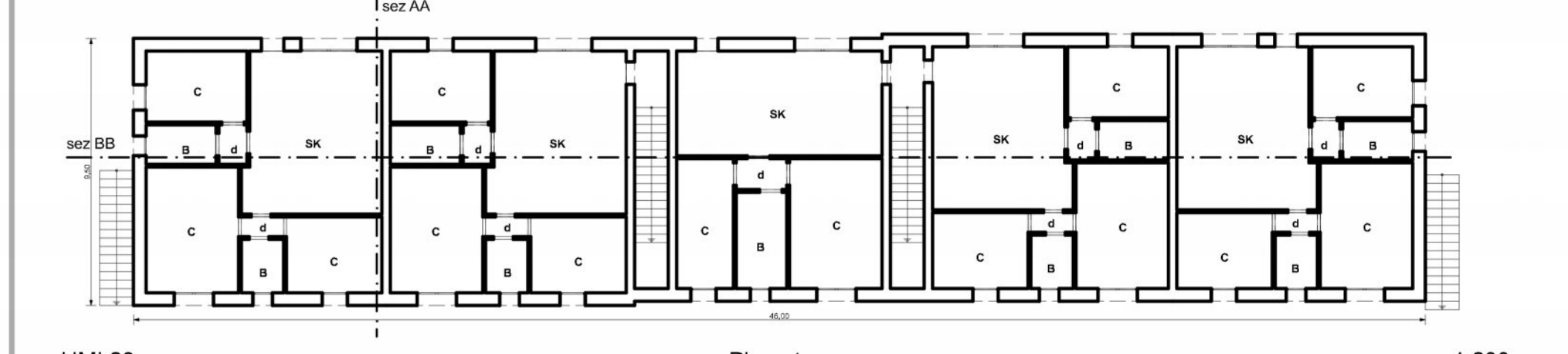
Sezione tipo AA (valido per tutte le UMI) 1:200



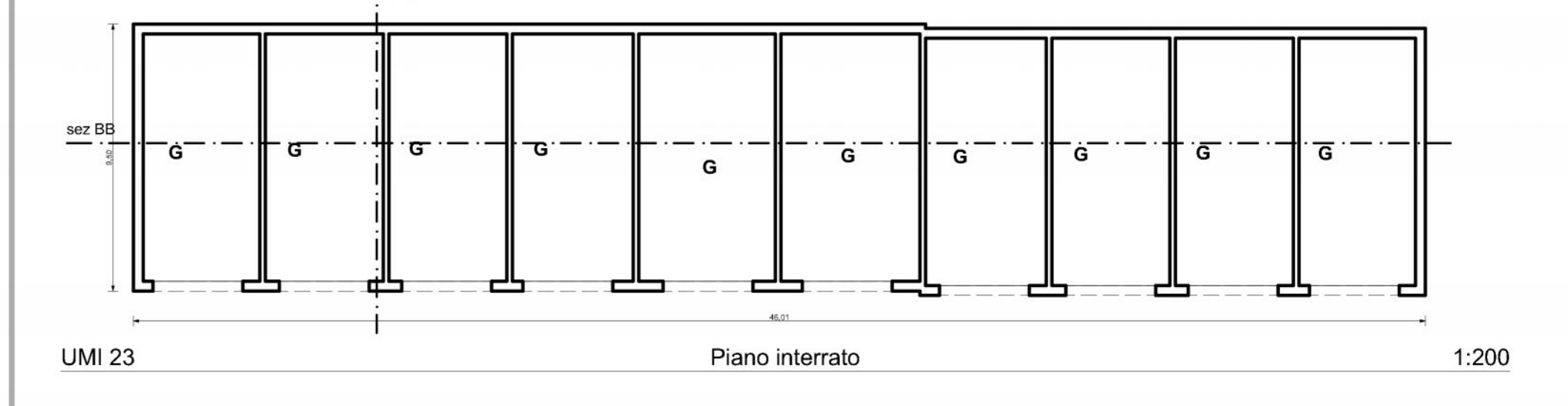
Planimetria generale (con accorpamento dei lotti) 1:500



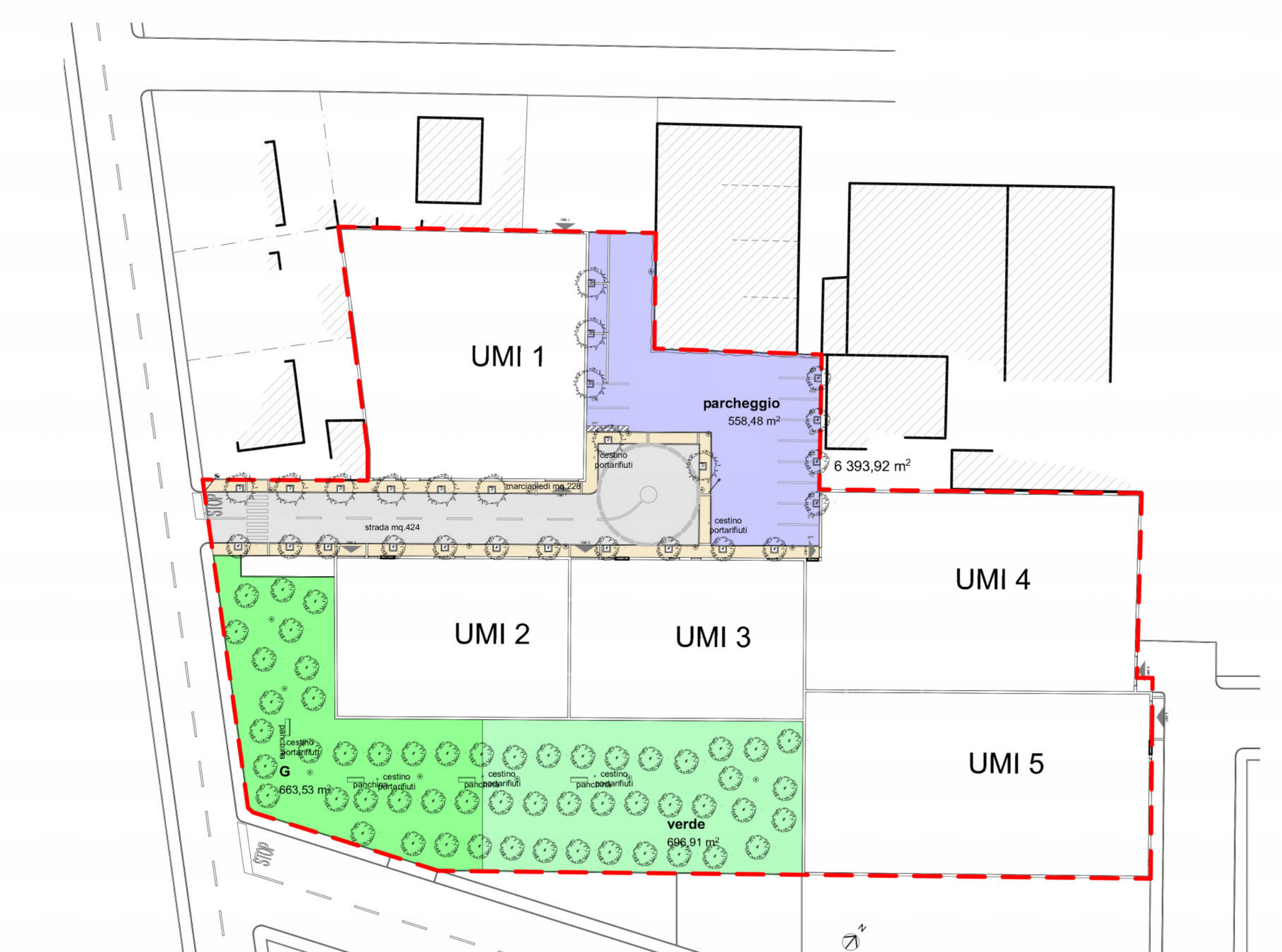
UMI 23 Piano primo 1:200



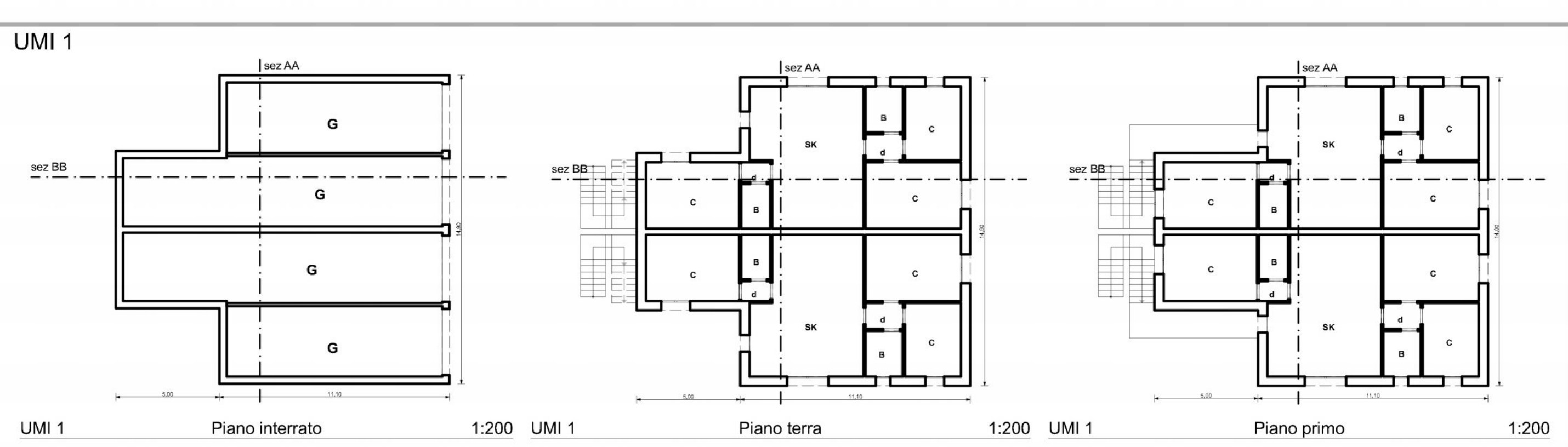
UMI 23 Piano terra 1:200



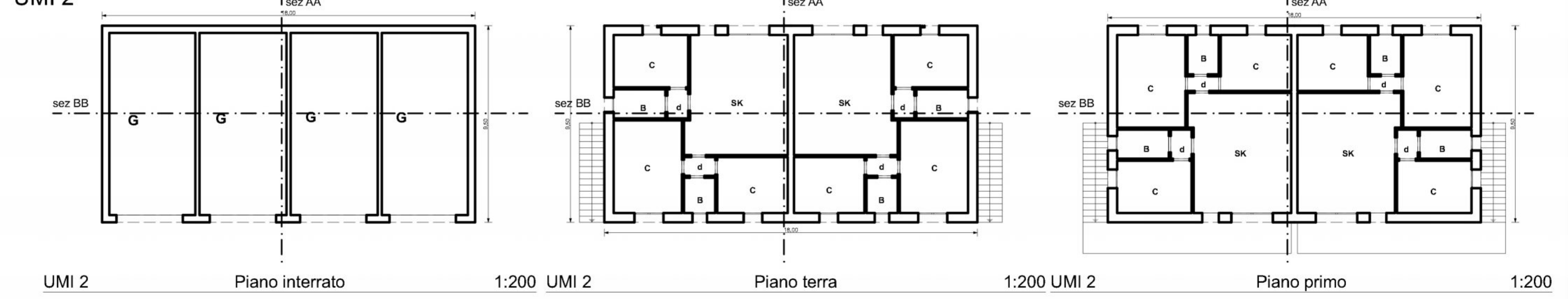
UMI 23 Piano interrato 1:200



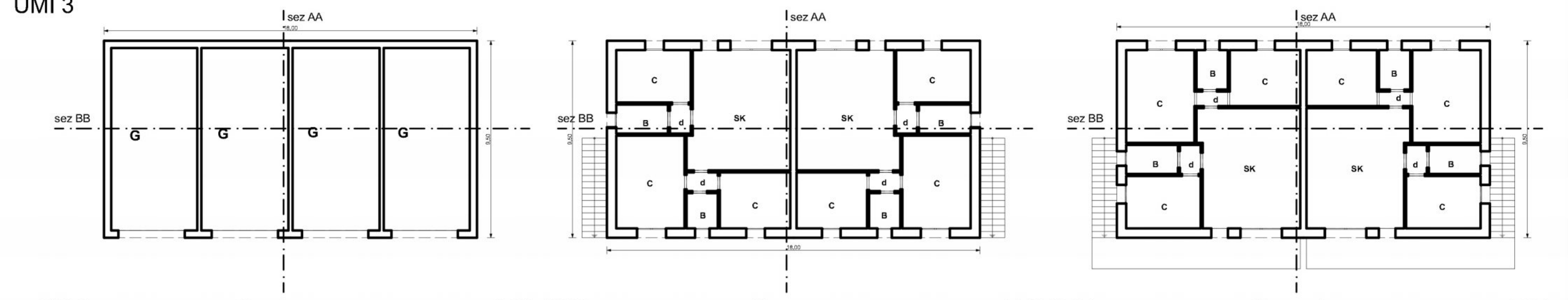
Planimetria generale 1:500



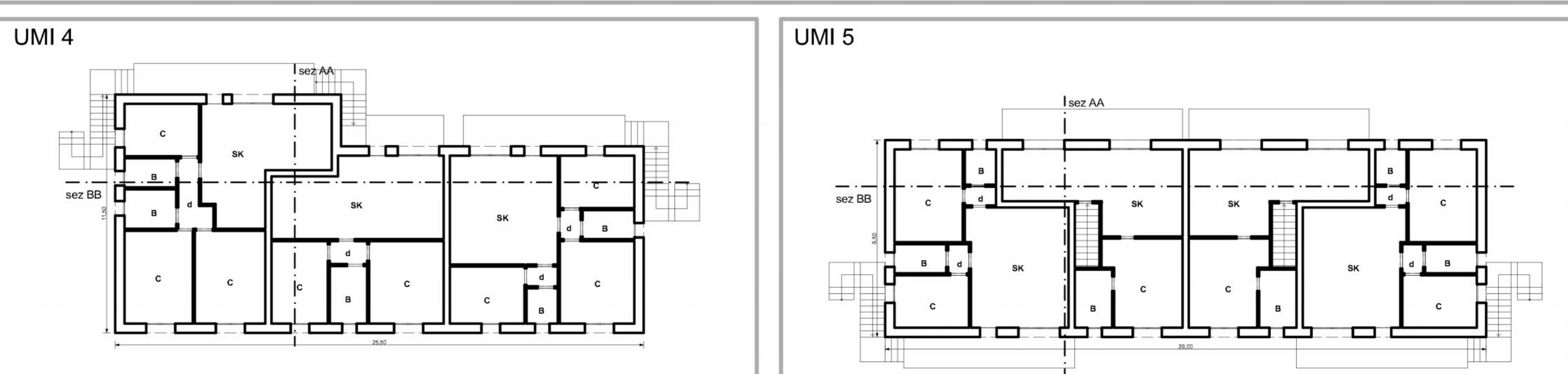
UMI 1 Piano interrato 1:200 UMI 1 Piano terra 1:200 UMI 1 Piano primo 1:200



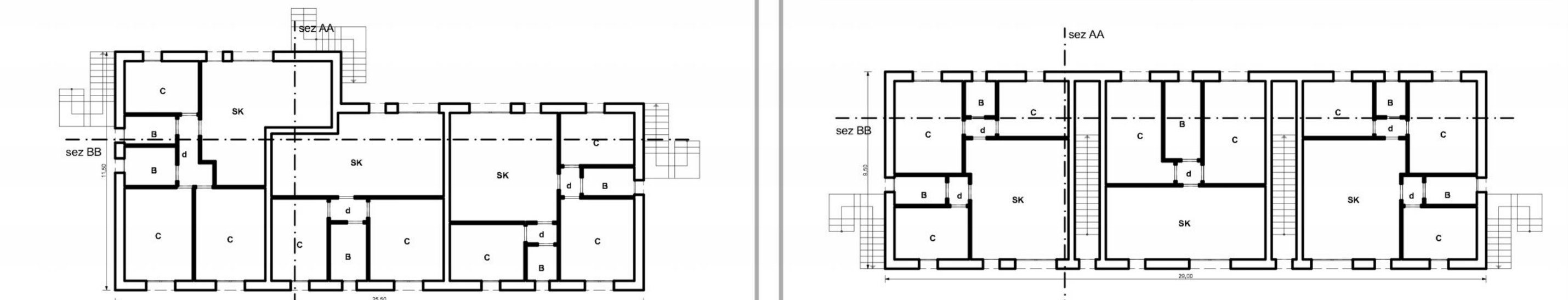
UMI 2 Piano interrato 1:200 UMI 2 Piano terra 1:200 UMI 2 Piano primo 1:200



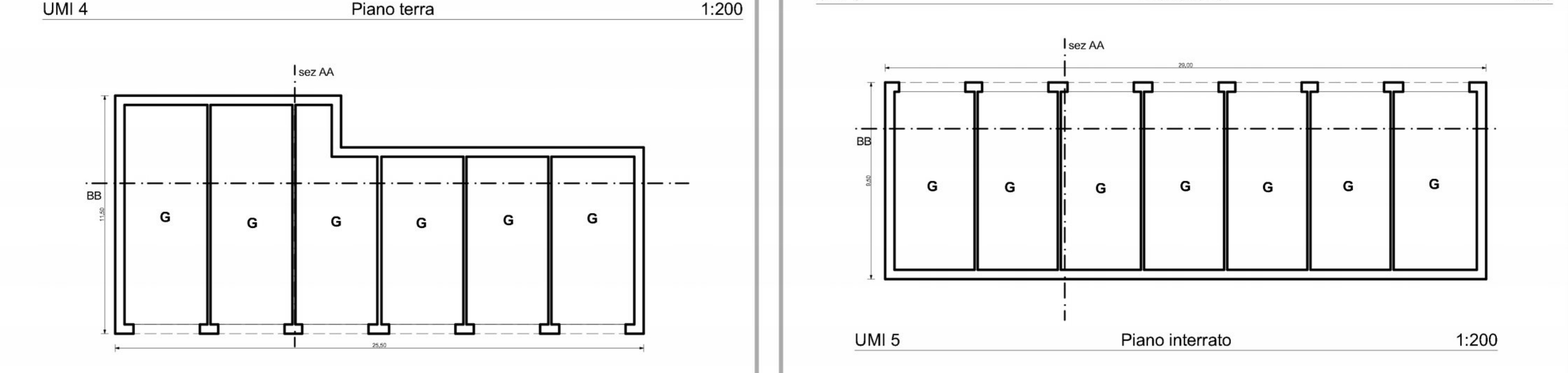
UMI 3 Piano interrato 1:200 UMI 3 Piano terra 1:200 UMI 3 Piano primo 1:200



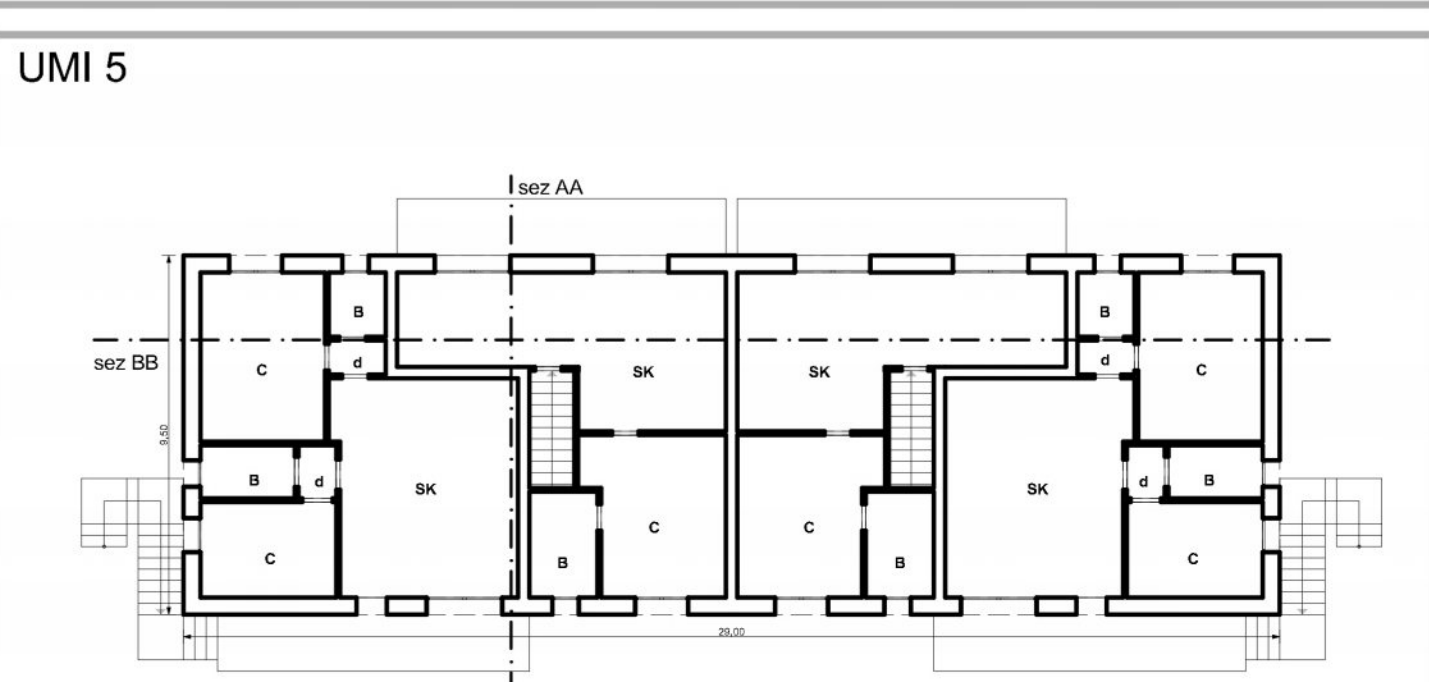
UMI 4 Piano primo 1:200



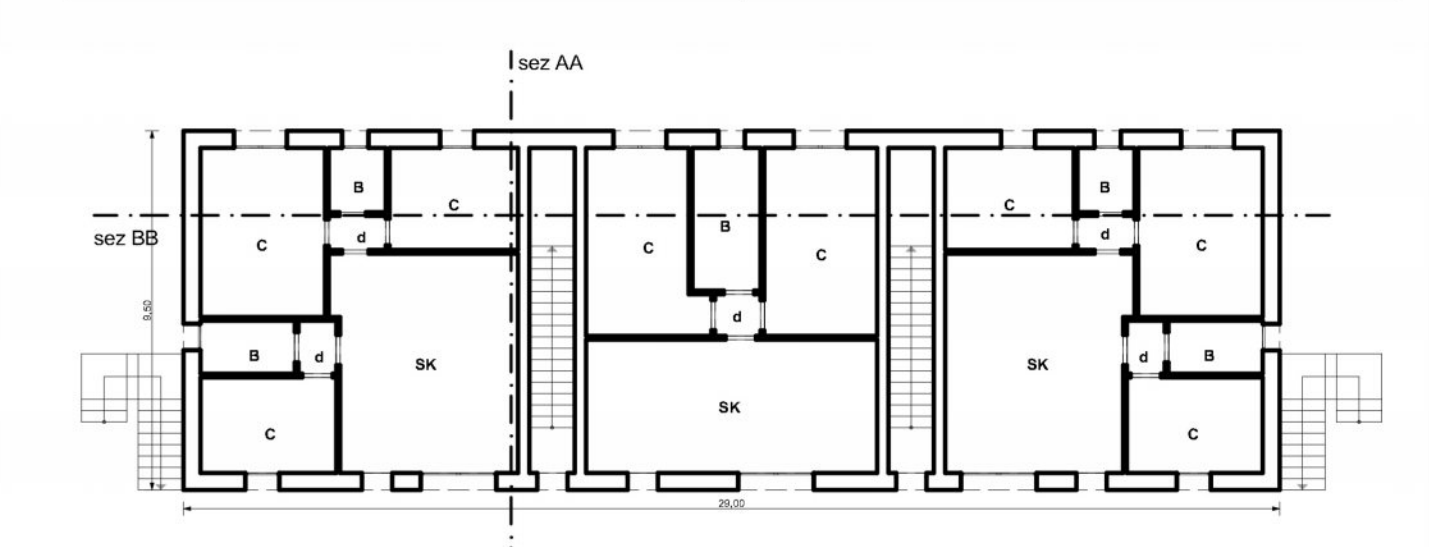
UMI 4 Piano terra 1:200



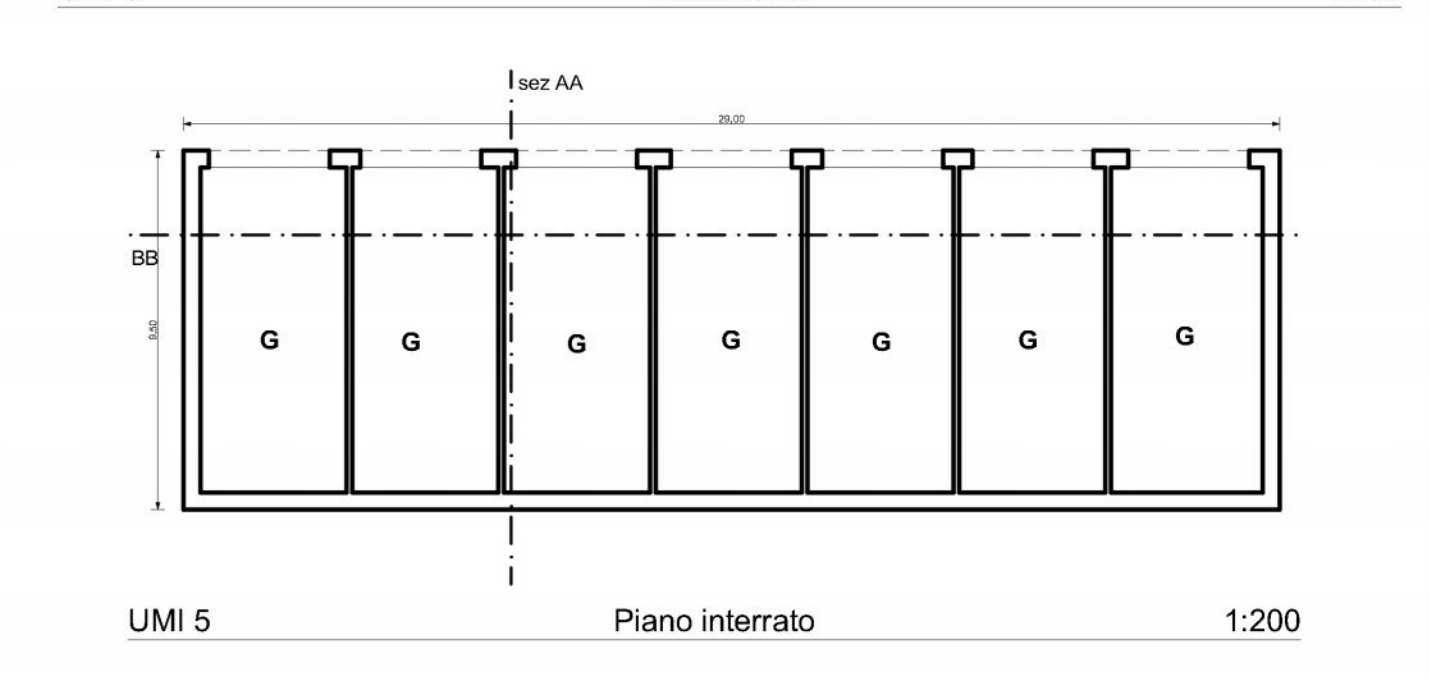
UMI 4 Piano interrato 1:200



UMI 5 Piano primo 1:200



UMI 5 Piano terra 1:200



UMI 5 Piano interrato 1:200

ARCHIGIO STUDIO DI ARCHITETTURA E GEOLOGIA  
 Architetto Giancarlo Bertini  
 Geologo Lucio Tardito  
 47013 Marina di Gioi (RN)  
 tel. 0577 932418

NUOVO COMPLESSO URBANISTICO  
**M29**  
 comparto 85 (m29)

INNOVA  
 Colture di massa di piante di G.A. nel Dipartimento di Agronomia, Coltivazione e Horticoltura dell'Università di Bologna

PROGETTO  
 Tipologie edilizie

**B.01.05**

**LEGENDA**  
 SK soggiorno cucina  
 C camera  
 B bagno  
 d disimpegno  
 r ripostiglio  
 G garage privato